



CAPS approval for new degree

The NZVCC Committee on University Academic Programmes has given approval for the university to offer a new degree — a Bachelor of Engineering (Environmental). It will be offered for the first time in 1994.

The establishment of the degree has been in recognition of an international demand for professional engineers who are more aware of the needs of both society and the environment. This recognition within the School of Engineering was given impetus with the report from the Institution of Professional Engineers New Zealand (IPENZ) Moderation Panel in 1991 which recommended the department consider establishing a BE (Environmental).

Along with the basic skills in science and engineering, the new degree course will aim to give an appreciation of society's needs, an understanding of the physical environment, an awareness of the engineer's role in environmental assessment, and an ability to communicate effectively.

All students will complete the Intermediate year and either the First Professional year of study for a BE (Civil) or BE (Chemical and Process). They will then be able to choose study options within a number of other departments, including Zoology, Plant and

Microbial Sciences, Geography, Geology and Chemistry. The course has been designed this way to give students two years of study and maturity before finally deciding on their degree path.

To put the degree into an international context, the environmental management industry is now the fastest growing industry in the USA and it is estimated that almost one tenth of the annual 8,800 civil engineering graduates in the US are finding employment as environmental engineers. Closer to home, at least five universities in Australia now offer degrees in environmental engineering.

Environmental degrees come in many guises. For the Canterbury BE (Environmental) environmental engineering has been defined as the use of science, technology and planning for minimising the adverse impacts of society on the environment.

Graduates will thus be involved at all stages of projects from planning through to commissioning and operation. Their future lies with consulting firms, with district and regional councils, in industry and in research. They will possess a blend of scientific knowledge and engineering skills enabling them to solve the technically and socially complex problems that arise in an environmentally conscious society.

The BE (Environmental) is an engineering degree in that it meets the stated requirements of the Institution of Professional Engineers New Zealand for such a degree but it also requires a student to study a science discipline to the Stage 3 level. The Dean of Engineering, Associate Professor Alex Sutherland says "The School is excited about the new degree and looks forward with confidence to combining with the Faculty of Science in presenting the degree and in working with the students as they undertake the programme.

Erskine Visitor familiar with environmental engineering



Photo by Duncan Shaw-Brown, Av Centre

Professor David Wilkinson, a current Erskine Visiting Fellow to the Department of Civil Engineering, was instrumental in setting up a degree in Environmental Engineering at the University of New South Wales.

Their four year degree course is aimed at providing a sound framework for the development of practical solutions to environmental problems. "Engineers tend to get hammered round the head because they are usually involved in the sorts of things that people regard as degrading the environment. Or having undesirable effects. So it's a social responsibility that engineers needs to be aware of."

However, he goes on to say that there is no general consensus on what constitutes an environmental degree. "The trouble with many of the current programmes that are put together at the moment is that they produce engineers with some training in the

Professor David Lloyd honoured

Professor David Lloyd (Plant and Microbial Sciences) has been elected a Foreign Honorary Member of the American Academy of Arts and Sciences.

Professor Lloyd joins 3,150 Fellows and 550 Foreign Honorary Members elected by their peers in recognition of distinguished achievement.

The American Academy of Arts and Sciences was established in 1780 "to cultivate every art and science which may tend to advance the interest, honor, dignity, and happiness of a free, independent, and virtuous people".

Although membership has principally been drawn from among American scholars, artists and statesmen, from the beginning the Academy has extended honorary membership to distinguished men and women from other parts of the world.

Among them have been John Stuart Mill, William Gladstone, Alfred Lord Tennyson, Winston Churchill, Jawaharlal Nehru, Albert Schweitzer and Samuel Beckett. It includes 172 Nobel Prize laureates.

An important aim of the Academy is to provide a forum for leaders across many disciplines in the search for constructive and innovative solutions for dealing with the increasing interdependence of societies and

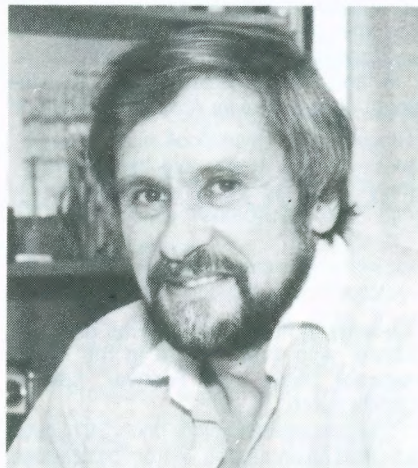


Photo by Duncan Shaw-Brown, Av Centre

the growing complexity of global problems. "The Academy offers a powerful antidote to the increasing specialisation of disciplines by providing opportunities for scholars from various fields to discuss topics of mutual interest."

Professor Lloyd was elected a Fellow of the Royal Society in 1992. His membership of the American Academy of Arts and Sciences is a further recognition of his distinguished contribution to science.

Continued on Page 2

BE — continued

environmental sciences but without an understanding of the broad base of environmental management. That is treating the environment as though it is a totally technical problem. If those are the only skills you have, they are inadequate in my view."

Professor Wilkinson believes the ability to understand the work of other specialists, to be able to communicate effectively, and to have some understanding of the sociology of the environmental movement and public concerns are all necessary skills for an environmental engineer. Courses in liberal and general studies are a prerequisite for any professional programme at UNSW. "It is unusual in Australia and it's very contentious. A lot of people would like to do away with it. I approve of it. And if you talk to alumni who have been through the process it's surprising how many will talk about the general education component of the course as being one of the highlights."

UNSW will produce its first environmental engineering graduates next year. The course has attracted top students and a remarkably high number of women. "We have attracted quite a bit of media attention because 60% of students are women and they are bright. We had one girl last year who got high distinctions in ten subjects and distinction in another. Those marks are incredible." Professor Wilkinson says the novelty value of having an unusually high number of women in the course will wear off, but it has helped in the promotion of the degree.

Although he would like to see more emphasis on the development of communication skills, and environmental philosophy and sociology, Professor Wilkinson is enthusiastic about the new degree at Canterbury and the department. "It's a really good course and, in my opinion, the civil engineering school here overall is probably one of the best in the Southern Hemisphere."

Journal appointment

Dr Rob Hughes (Reader, Psychology Department), has recently been appointed Editor of the *International Journal of Comparative Psychology*.

Dr Hughes succeeds the foundation Editor, the distinguished American comparative psychologist, Dr Ethel Tobach of the American Museum of Natural History. Dr Hughes was a member of the Editorial Board of the journal (representing 17 countries) prior to his appointment.

The journal was established in 1987 as the official journal for the International Society for Comparative Psychology which is an affiliate organisation of the International Union of Psychological Science. The journal stands for the proliferation of scientific information relating to the theoretical development and experimental investigation of comparative psychology (defined as the evolution and development of behaviour).

Dr Hughes' appointment is seen as recognition of the prominent role played by New Zealand and Australian psychologists in research and writing in comparative psychology and animal behaviour.

Canterbury graduate celebrated in Women's Suffrage Year

Although astrophysicist Beatrice Tinsley has won world recognition for her outstanding contributions to our knowledge of the universe, she is still an unknown name to many New Zealanders.

In its *Celebration* series Television New Zealand is featuring Beatrice Tinsley as one of New Zealand's outstanding women.

Considered a genius, she was still only in her 20s when she wrote the thesis on galactic evolution which made her a world leader in modern cosmology.

Beatrice Tinsley went on, at the age of 37, to become a professor of astronomy at Yale University in the United States but tragedy struck, and she died from melanoma cancer only two months after her 40th birthday in 1981.

It seemed clear, even from childhood, that Beatrice was destined for extraordinary success in her life. During her days at New Plymouth Girls' High School, she earned a reputation as a person of exceptional character and intellect but she was also a talented violin player and had a genuine concern for the well-being of others.

However, it was her intelligence and hard work that is most remembered. Her physics teacher, Joyce Jarrold, recalls her as a 14-year-old asking to borrow some 7th form physics textbooks. "I knew she was bright, but I was sceptical. When you teach, you're mostly trying to drum something in. Very occasionally you realise that you are dealing with a mind that is infinitely superior to your own. Beatrice came into that category."

She was just 16 when she became dux of her school and won a Junior University Scholarship.

She went on to become an outstanding student — studying physics, chemistry and mathematics — and graduating with first-class honours for her MSc thesis in 1963.

At university, Beatrice met and married fellow student and physicist Brian Tinsley, and after their graduation, both hoped for postgraduate positions in the same centre.

In 1963, Brian accepted a position with the South West Centre for Advanced Studies in



Dallas. But there was no suitable work for Beatrice — who found she wasn't taken seriously. She made the difficult decision to commute to the astronomy department of the University of Texas in Austin 200 miles away.

It was there she wrote her PhD thesis, "Evolution of Galaxies and its Significance for Cosmology", which showed that the Universe is populated with billions of galaxies that are receding from one another.

Completed in 1966, in less than a third of the usual time, the work was regarded by her professors as "extraordinary and profound" and became the foundation for modern studies of galactic evolution.

While working on her thesis, Beatrice also became a mother, adopting a son in 1966, and two years later, a daughter — both of whom are still in the States.

By the time of her death 14 years later, she had authored or co-authored some one hundred scientific papers relating to her specialised field. The American Astronomical Society created the Beatrice M Tinsley Medal in her honour.

School of Fine Arts film-makers scoop the pool

Students in the School of Fine Arts Film School won every award in the recent National Short Film Festival, held in Christchurch.

The competition for films under 30 minutes attracted 56 entries, some from professional film makers, and some with budgets in excess of \$80,000. Mr Bill de Friez, Head of the university Film School, is delighted, but understandably rather overwhelmed by the success. "It's absolutely stunning. It's amazing."

The Festival was initiated in 1992 by Christchurch film-makers and film lovers David Reid and John Christoffels (also a graduate of the Film School and cameraman for the University's promotional video). They had wanted a forum for the public screening

of short films being made by students, aspiring film-makers and professional film-makers who chose to work in the short film format. The 56 entries were screened over three nights at Christchurch's Regent Cinema One.

"And the winners are . . ."

Best Film Over All, and Best Documentary: *New Directions — Trim Genes*, Matthew Lawrence

Best Drama/Fiction: *Euphoria*, Struan Ashby

Best Experimental Film: *Lenny Minute 1*, Glenn Standring. (This was also selected for the Cannes Film Festival this year)

Best Student Film: *The Assumption*, Mary Trubuhovich

Best Animation: *Word of Mouth*, Jane Gratowski.

"Accounting Logic" not always appropriate

Professor Richard Laughlin, an Erskine Visitor to the Department of Accountancy, believes that the use of "accounting logic" in areas such as health and education may not be appropriate.

Professor of Accounting at Sheffield University Management School, Professor Laughlin's research into health and education in Britain has identified many of the issues also being debated in New Zealand as a result of public sector reform.

"Accounting logic" assumes that the use of finance needs to be evaluated in terms of some measurable outputs achieved and value added. Also that it is possible to undertake this evaluation by considering how the money is received and used. However, Professor Laughlin makes the point that there are a lot of things of value in health and education that cannot be measured in this way. In other words, not everything has a price tag.

One response to recent government policy in these areas in New Zealand has been a feeling of frustration that the model for these reforms has not been applicable but the administration's stated view is that there is no alternative. Margaret Thatcher, when Prime Minister of Britain, promoted many of her government's reforms in much the same way. "But," Professor Laughlin says, "there are always alternative ways of doing things."

In his view the financial model is not necessarily applicable to health and education and alternatives should be debated.

Professor Laughlin subscribes to the Habermasian school of thought, the central thesis of which is that when as a society we debate issues of importance we create three important elements for social evolution: (1) a "lifeworld" — accumulated and changing views about our world, our social relationships and ourselves. (2) "Systems" — separate and distinct organisations in our society which reflect and express in differing ways this changing lifeworld. (3) "Steering media" — the means to ensure that the increasingly complex systems reflect and express current lifeworld demands.

If there is no discourse, however, the steering media take on a life of their own. "They colonise the lifeworld and act as its master instead of its servant."

The government of the day is one of the society's principal "Steering Media" and Professor Laughlin believes that many of the public sector reforms both in Britain and New Zealand have been carried out without appropriate discourse. His own research into how medical practices and local schools are coping with the reforms has revealed a great deal of frustration and stress at what is believed to be a lack of proper debate. This is particularly so over the use of a financial model for many of those reforms.

Following on from that, Professor Laughlin believes it's time we questioned the assumption underpinning many of the current reforms, namely that the private sector has good management practices and should be the role model for good management in the public sector. "When you

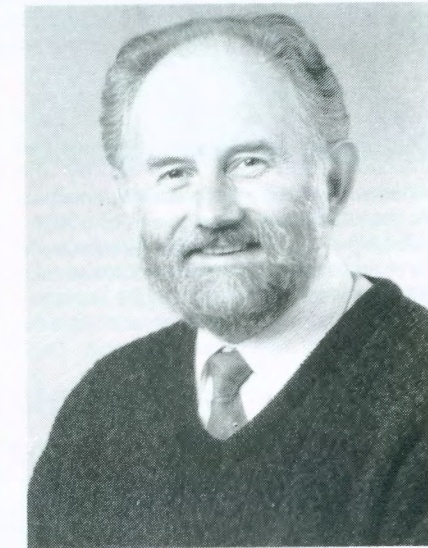
scrutinise the performance of many of the major companies over the last five years, you have to question that assumption."

Professor Laughlin's final seminars on these very topical subjects will be held in Okeover, home of the Centre for Continuing Education, on:

Monday 9 August 9.00am: Absorbing Local Management of Schools: The Coping Mechanism of a Small Group.

Friday 13 August 9.00am: Recent Financial and Administrative Changes in GP Practices: Initial Experiences and Effects.

Copies of his earlier presentations are available from the Department of Accountancy.



Professor Richard Laughlin, Professor of Accounting at the Sheffield University Management School, is based in the Department of Accountancy from 16 July to 3 September.

Professor Laughlin's areas of interest are financial accounting, and accounting theory and management. He is in the forefront of researchers bringing an interdisciplinary approach to accounting theory.

Whilst with the department he will give lectures on accounting methodology, critical accounting and case study research in accounting. He will also conduct staff research seminars.

Professor Laughlin graduated Master of Social Science (MSocSc) in Accounting from the University of Birmingham in 1973. He joined the staff of the University of Sheffield in that year. In 1985 he was awarded his PhD. His thesis was titled: *The Design of Accounting Systems: A General Theory with and Empirical Study of the Church of England*. From 1976-78 Professor Laughlin was Parish Administrator based at St Thomas' Church in Sheffield.

In 1979 he was made a Fellow of the Institute of Chartered Accountants in England and Wales.

8 6 AUG 1993

Shutdown of telephone system

On Saturday 21 August 1993, Telecom will be installing new equipment in our PABX as the next stage in upgrading our telephone system.

It is likely that our telephone system will be completely out of action for most of the day, which means that calls cannot be made or received either internally or externally. Our emergency 6111 line will also not operate during the shutdown. Any equipment reliant on the PABX will not function, including all University telephones, fax machines and modems. On-campus pay phones will continue to operate normally.

We will be employing additional security staff, with radio telephones, to patrol the campus and relay any emergency requests to our security control in the Registry. A cellphone will be available at our security desk in order that calls may be made to emergency services.

Please inform staff and students who may be on campus on 21 August, that they will be unable to use the telephones, fax machines, etc. during that day.

Particular vigilance regarding fire will be required. Although the fire alarms will sound in the building affected, the system will be unable to automatically relay the fire call to our security desk. Any person locating a fire should immediately make their way to the Registry, advise a security officer if present in the area, or use a pay phone to call 111 (telephone card or coins are not required to make an emergency call).

Service is expected to be restored by 5pm on Saturday.

Christchurch Lifelines Study

A project is now under way in Christchurch applying the methodology developed in the major project carried out by the Centre for Advanced Engineering in 1990-91 on *Lifelines in Earthquakes*.

This will study the potential impact of natural hazards on essential services in the Christchurch area, including Lyttelton. The lifeline services being studied are water, sanitary and stormwater drainage, electricity, telecommunications, broadcasting, transport (road, rail, sea and air) and liquid fuels.

One scenario is a major earthquake event with a return period of about 100-150 years. A flooding scenario will be about a 150 year return flood of the Waimakariri River. A third scenario will be a severe rainstorm resulting in local flooding of the Heathcote, Avon and Styx Rivers, and landslips in the hill suburbs. A severe windstorm scenario will be examined and also a tsunami (tidal wave) on the coast.

The study is being carried out under the management of the Canterbury Regional Council. CAE is arranging a public meeting in association with the IPENZ Canterbury Branch to present progress to date. This will be held in **Room E5 at 7.30pm on Wednesday 11 August.**

Hopkins Lecture 1993

Sir Miles Warren recently delivered the 1993 Hopkins Lecture at the Town Hall.

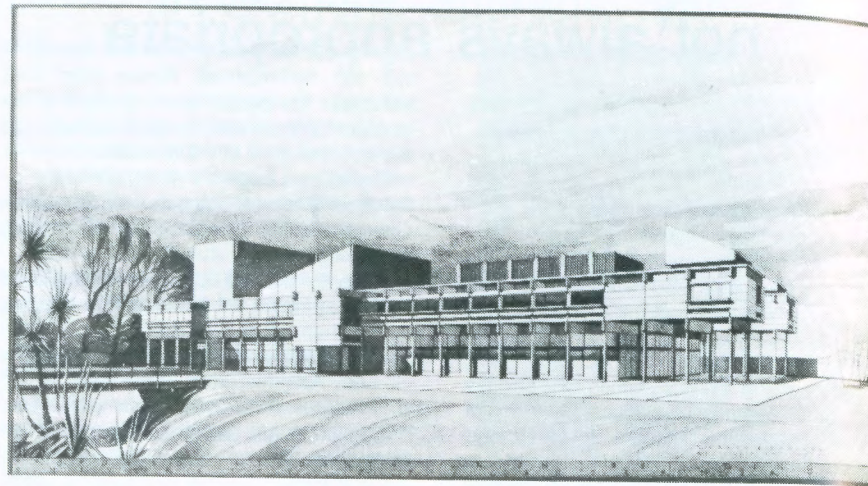
The Hopkins Lecture is an annual public lecture sponsored by the University of Canterbury School of Engineering and the Institution of Professional Engineers New Zealand (IPENZ) in memory of the contribution of Professor Harry Hopkins to the Department of Civil Engineering and to the engineering profession for many years until his retirement in 1978.

The Lecture is given by a distinguished speaker on a subject of interest to members of the engineering profession. The purpose is to encourage discussion and to promote public understanding of engineering issues.

Sir Miles Warren, one of New Zealand's leading architects, chose as the theme for his lecture "Engineers and Architects — Love Hate Relationship".

Dr Andrew Buchanan, senior lecturer in Civil Engineering, was amongst the many from both professions who attended the Lecture.

"The promised discourse on the love-hate relationship between architect and engineer was not developed in depth, but Sir Miles gave a fascinating illustrated description of post-war New Zealand architecture in the context of the last 200 years of European architecture from the "pre-modern" era of Victorian England, through the great "modern" movement of which he was part, to the current "post-modern" age.



Last year Sir Miles Warren presented the University with a watercolour of his firm's design for the Students' Association building. During the course of the Hopkins Lecture he described it as a "skeletal encrustation of carpentry in concrete."

He described how the modern movement grew from the battle between the Gothic and classic styles, accompanied by the development of new engineering materials in the Victorian era.

Sir Miles considered himself fortunate to have worked with Cecil Wood in Christchurch before studying architecture at the University of Auckland after the war with a new generation of innovative architects. Cecil

Wood produced some excellent buildings at Christ's College at the end of the "pre-modern" era. The buildings were designed for appearance with "the structure stuffed in later".

Sir Miles was then exposed to the new "brutalist" movement in London before returning to New Zealand with new ideas. His exposure to load-bearing masonry in England resulted in the exploration of reinforced concrete block as a new New Zealand building material, with the help of engineer Lyall Holmes. The discovery of concrete masonry was a new departure in New Zealand where we had "always been carpenters, not masons". For Sir Miles, concrete masonry led from modest houses, flats and offices to the award-winning College House at the University of Canterbury.

The other University of Canterbury building which made a major impact was the "structural bravura" of the Students Association which Sir Miles described as a "skeletal encrustation of carpentry in concrete".

The need to incorporate earthquake-resisting structure into all of these buildings was seen as a challenging starting point rather than a negative constraint. The exposure of the basic structural form, described as "constructivism", became an important part of many buildings to follow.

Other Christchurch buildings in this development included the Christchurch Town Hall, followed by Trustbank Canterbury and the Canterbury Public Library, where structure and services are exposed for all to admire.

Sir Miles expressed regrets that modernism has since withered away into the rebellion of the post-modernism jumble of styles where anything and everything is possible, from reflective glass to the over-decorated. He is concerned that the evolution of new indigenous styles of architecture will be impossible in the new age of instant international information transfer through glossy architectural magazines.

We are fortunate to have his mark on this campus, and in this city for many years to come.

Andrew Buchanan

Assistant Registrar made Fellow



Mr Warwick Goode on the occasion of his election as a Fellow of the Society of Accountants.

Mr Warwick Goode, the University's Assistant Registrar Finance has been elected a Fellow of the Society of Accountants. The Society grants Fellowship status only to those who have made a contribution to the profession and to the society.

Members of the Society cannot apply to be a Fellow and Mr Goode says "It's the biggest thrill of my life. Because it is given by my peers."

Mr Goode graduated from Canterbury in 1953. He has tutored in accountancy and was the first secretary of the University of Canterbury (Graduates) Association. At the

relatively young age of 32 years, Mr Goode was the Chairman of the Canterbury branch of the Society of Accountants.

He subsequently went to live in Queenstown for 16 years. He has wide experience with public accountants, as a company secretary, in the motor trade and as an accounting clerk for local authorities. He has also been president of two Rotary clubs and has held office in a wide number of other organisations reflecting his interests in the welfare of the disabled, in music and philately.

Mr Goode joined the staff at Canterbury in 1988.

Engineering Study Award

The 1993 Kingston Morrison Engineering Study Award has gone to a final year Civil Engineering student, Sarah Wills.

Kingston Morrison Limited is a multidisciplinary consultancy focusing on architecture, engineering, planning and science. In establishing the award the company wished to recognise outstanding achievement in preparation for a career involving engineering. Potential leadership qualities and a contribution to student and university life were important criteria, along with academic achievement.

Ms Wills has been involved with several extracurricular activities including playing and administering university soccer. She was a New Zealand University Women's Soccer Representative in 1992.

Mr Steven Gentry, Chairman of Kingston Morrison Ltd., commented that the shortlisted candidates for the award were of a very high standard and that the engineering profession had excellent advocates in these young people.

Dr Nigel Cooke, the present Head of Civil Engineering, commented that the department is pleased to receive such strong support from the profession as it strengthens the links between the University and industry. He agreed with Mr Steven Gentry, that the standard of the short-listed candidates was very high, and that the interviewers believe that Ms Wills has the all-round abilities needed to become a leading engineer.



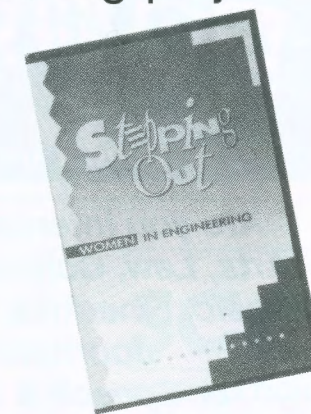
Sarah Wills is presented with a specially designed Award certificate and a cheque for \$2000 to assist her in her final year of undergraduate studies. The presentation was made by Dr David Hopkins, a graduate of the department and now a partner in the Auckland branch of the consultancy. Dr Hopkins is the son of Professor Harry Hopkins who for 27 years was Head of the Department of Civil Engineering at the University of Canterbury.

Continuing support for Women Into Engineering project

New Zealand Aluminium Smelters has agreed to fund for a second year the University of Canterbury "Women Into Engineering" project, the principal aim of which is to encourage more young women to see professional engineering as an attractive career prospect.

The School of Engineering is most appreciative of the significant financial support (now in excess of \$100,000) being given to this programme by NZAS. "We are very conscious of the low participation rates of women in engineering degree programmes and have been working hard to attract more women into the School. However, there is still a widely accepted view within the community that engineering is not a suitable career for women. This is of course a quite unsustainable view as our women graduates will attest. We hope that by targeting career advisors and other school personnel that a better understanding of professional engineering as a career will be built up in the community and thus its sustainability as a career for women will become obvious and accepted."

Assurance of the funding will allow Project Co-ordinator, Ms Elizabeth Roxborough, to continue holding seminars around the country for school careers advisers, science and maths teachers and members of the Institution of Professional Engineers who are involved in school liaison work. Ms Roxborough says the reception of the video produced for the project [which was separately funded by NZAS] has been particularly pleasing. "Stepping Out" is clearly



seen as a valuable resource in changing traditional attitudes towards the involvement of women in professional engineering.

106 copies of the video have been distributed or sold to schools and professional engineering organisations throughout the country.

It has also found favour in Australia. Mr Roger Hopkins, Director of Member Affairs for the Institution of Engineers in Australia, has written saying: "The video is interesting to watch, clearly and simply explains what a professional engineer does and portrays both males and females." The Institution is not only going to acquire a copy of the video, it also wishes to use it as a model for updating its own "Make it in Engineering" video.

As well, the National Centre for Women in Melbourne have requested a copy of "Stepping Out" for its library.

Stocker's strategy plagiarism-proof

Dr Mark Stocker (Art History) has scooped the prize for the best example of a plagiarism-proof essay topic.

Mark Stocker believes that breaking the traditional rule of not using the first person in an essay is one way to guard against plagiarism. "The chances are that the assignment will come from that person and not from the text."

Examples he has set for his students are: *You are a fashionable figure of 1780 and fashionable artists wish to paint you. Who would you choose and why?* and *It is 1938 and the Modern English Art Club is debating the issue "Modern art is at best elitist and at worst irrelevant" Among those invited to participate are Messrs Nicholson, Read, Nash, Munnings, Spencer and Mrs Hepworth, Knight and Hodgkins. As club secretary you have been asked to record the evening's proceedings...*

He says the essays are challenging to write "but rewarding in the long term for the students and far more interesting to mark than more conventionally worded themes".

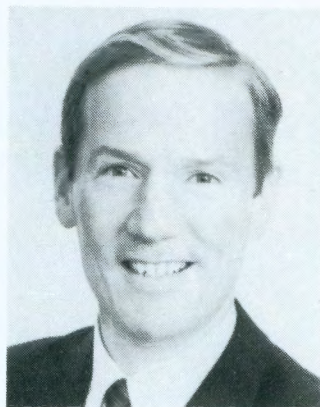
The Australian higher education newspaper *Campus Review*, which ran the competition, described Dr Stocker's essay topics as 'ingenious' and awarded him a copy of *Recycling* by Brett Charles. A prize they describe as 'lavish'.

HOD

Dr Colin Freeman has been appointed Head of the Department of Chemistry for a further five years, commencing on the 1 December 1993.

Experienced educator to join Law School

Mr Richard Scragg, currently a Senior Instructor with the Institute of Professional Legal Studies, will take up a position as lecturer in the School of Law on 1 September this year.



Mr Scragg has previously contributed to courses in Commercial Law and Commercial Securities as both a lecturer and tutor. In his new position he will teach Legal System, Contract and Land Law as well as continuing to contribute to Commercial Law courses.

He has extensive experience teaching continuing legal education programmes. In 1988 and 1990 he was a faculty member of the New Zealand Law Society's Litigation Skills Course and in 1991/92 he was an instructor with the Canterbury District Law Society's programme on Advocacy Skills.

In 1972 Mr Scragg graduated with LLB(Hons) from Canterbury. From then until 1987 he was in practice as a Barrister and Solicitor in both Ashburton and Christchurch. During 1985 he completed certificates of proficiency in Computers and Law, and Banking and Law. In 1992 he completed his LL.M.

Indonesian cultural exhibition

Bringing a taste of their home culture to Christchurch, the Indonesian Students' Association is holding an exhibition on Saturday 21 August.

They say that Bali is the only part of Indonesia likely to be familiar to most New Zealanders, yet the country consists of 13,667 islands and islets and 360 ethnic groups, each with its own cultural variety.

The Association decided to offer Christchurch people something of the wide range of sights, smells and sounds their country has to offer through an exhibition of food, costume, crafts, music and dance.

The food exhibition will include providing recipes, ingredients and demonstrations on how to prepare and serve the various dishes. There will be displays of traditional dance from Bali, Java and Sumatra and performance of angklung and folk songs.

The exhibition is to be held in the Middleton Grange School Hall from 11.00am - 3.00pm.

Canadian engineer appointed in EEE

Dr John Hamel, a postdoctoral fellow in electrical and computer engineering at Canada's University of Waterloo, has been appointed a lecturer in the Department of Electrical and Electronic Engineering from next January.

Dr Hamel's research interests are in the modelling, design and fabrication of semiconductor devices and mixed analog/digital integrated circuits.

After completing a BE at the Royal Military College of Canada in Kingston Dr Hamel

served as a pilot/officer in the Canadian Armed Forces for four years. He then took a Master of Applied Science degree at Waterloo University before undertaking his doctorate, which was on the modelling, design and fabrication of polysilicon emitter bipolar transistors.

Apart from a short period as a visiting researcher at the University of Southampton he has worked as a postdoctoral fellow at Waterloo since the beginning of 1992.

Geography Students Conference Fund

The Fund was raised by Geography graduates, associates and the Canterbury Branch of the New Zealand Geographical Society to commemorate the golden jubilee of the Department of Geography in 1987.

Eligibility: For research students in the Department of Geography to assist with expenses involved in attending conferences;

priority shall be given to conferences of the New Zealand Geographical Society.

Value: Unspecified - paid following production of evidence that conference registration and travel arrangements have been finalised.

Applications: Scholarships Section, Level 3, Registry. Closing date: 30 September.

University of Canterbury

INFORMATION seminar For all prospective students

Monday, 23 & Tuesday, 24 August 1993, 10 am to 4 pm each day

School of Engineering Lecture Theatres

Are you interested in qualifications in Arts, Law, Commerce, Science, Forestry, Music, Fine Arts, Education, Engineering, Journalism, Social Work, or Speech & Language Therapy?

If you are intending to enrol or thinking of enrolling at University in 1994 this is your opportunity to find out about the subjects and courses offered at the University of Canterbury.

Each Department or Faculty will give a 45 minute presentation about courses it offers. You can choose the sessions you wish to attend and you will be able to visit many of the Departments and the University's facilities. If you would like a Programme or more details please ring the Liaison Office at 3667-001, ext 8994.

We look forward to welcoming you to the University of Canterbury

University Press book associated with award

Narration of a Canterbury University Press publication has won an award from the Foundation for the Blind.

Beyond the Nightmare: the story of a woman who married an alcoholic by Irene Harris was recorded for the Foundation by Frances Edmond and won the Talking Book of the Year New Zealand Post Narrator's Award for 1993.

Irene Harris was the daughter, sister and wife of alcoholic men. After 31 years of verbal abuse she went for treatment at Queen Mary Hospital in Hanmer Springs. Her account of her progress, *Beyond The Nightmare*, was designed and printed by the University Printery and published by the Canterbury University Press in 1991.

The Talking Book Award is presented annually to the narrator of a New Zealand book. Selection is by a panel of six user-judges from throughout New Zealand. Although the award is for quality of narration, with emphasis placed on recorded merit, literary merit is seen as an important element.



Irene Harris, author, and Frances Edmond, narrator, enjoy the presentation of the Talking Book of the Year Award.

American Studies seminars

The American Studies department is organizing a research seminar series. The format will be slightly different from the typical presentations in an attempt to get away from the "talking heads" style. First, anyone interested in the topic is invited to pick up a copy of the paper in the American Studies office a few days prior to the presentation. Second, a commentator, usually but not necessarily an academic staff member, will address and comment upon significant issues raised within the paper before the audience is invited to participate. Third, light refreshments will be provided.

The first seminar is 11 August, Wednesday at 2.30 in law 426. Dr Richard Pierard, History Professor at Indiana State University will be speaking on "The Religious Right in America: Where is it Going". Dr Colin Brown from the department of Philosophy and Religious Studies will be the commentator.

On 18 August at 4.00 in Law 426, Dr Josef Raab, from the American Studies department at Eichstatt University in Germany will be speaking on "The Wider Horizons of American Literature: Inter-American Connections". Brian Wearing from the American Studies department will provide commentary. Again, light refreshments will be provided.

And on Tuesday, 7 September at 2.00, Professor Anne Scott from the History department at Duke University will present, "Black Women in White America". Dr Maureen Montgomery from the American Studies Department will provide commentary. The room will be announced in the *Diary*.

The American Studies department hopes that this format will generate lively discussions and commentary. All are welcome.

German Academic Exchange Service Scholarships (DAAD) for the academic year 1994/95

Applications are invited from Music and Fine Arts only students for DAAD Scholarships which are tenable for study or research at universities, technical universities or academies of art and music in the Federal Republic of Germany, including West Berlin.

Eligibility: Music and Fine Arts students only. Knowledge of German adequate to follow lectures which will be given in German. Must be over 18 and under 32 years of age; preference given to 18-21.

Tenure: Generally 10 - 12 months.

Value: Monthly allowance of between DM900 and DM1490 as well as travel, medical and book allowances.

Applications and additional information from: Scholarships Section, Level 3, Registry. Closing date: 1 September 1993.

SCOTPAC

INTERNATIONAL MOVING

"THE ONE COMPANY"

NEW ZEALAND & WORLDWIDE

Scotpac offers a comprehensive door to door moving service throughout New Zealand and Worldwide

- Professional Pack & Wrap
- Customs Documentation
- All risks insurance
- Containerised storage

Obligation free quotes to all areas

TELEPHONE **348 0609** CHRISTCHURCH

BRANCHES THROUGHOUT NEW ZEALAND

Mysterious origins of the School of Engineering's magnolia

The University's projected building programme has, of course, significant implications for the landscaping of the campus. Grounds Superintendent, Mr Peter Cadigan, has a major task on his hands planning appropriate planting. This includes decisions on which of the existing trees and shrubs should be abandoned and which should be moved to new sites.

There was no argument as to the fate of the School of Engineering's magnificent magnolia tree which since the early 60s has added welcome beauty to the space between the Departments of Civil and Mechanical Engineering. The School asked the University architect to ensure its tree would be saved and not be a casualty of the building programme.

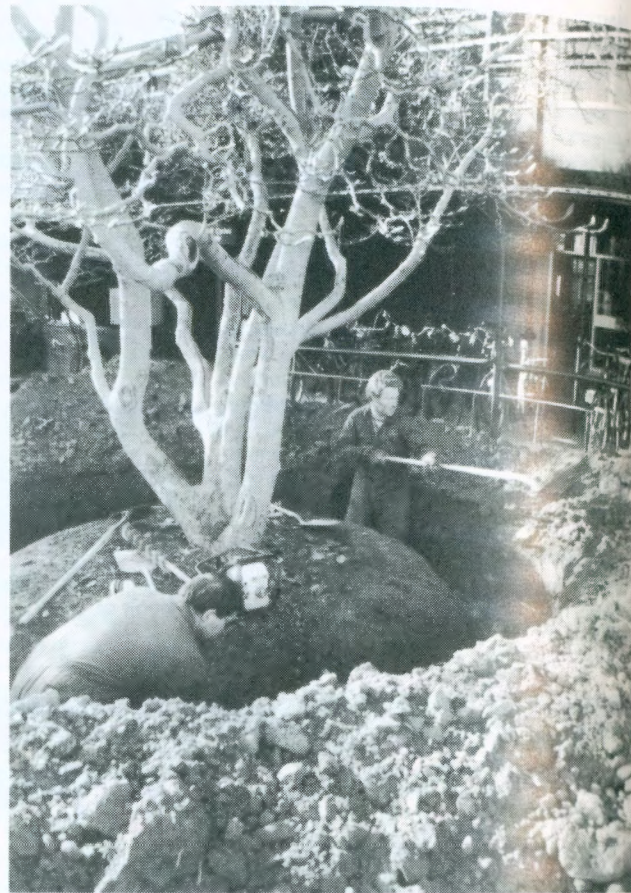
However, work on the new combined building for the two departments will begin in April next year and this is the only time between now and then when the tree is dormant, the optimum time for a shift.



The operation to transfer the *magnolia soulangeana* to a temporary home near Okeover was effected over two days. The Dean of Engineering expects the tree to return home after completion of the new building and to once more grace the area between the Civil and Mechanical Engineering wings.

The move sparked off much debate as to its origins. Two principal theories emerged: (1) That, as an already well established tree, it was donated by one of the University's new neighbours at the time the School of Engineering became resident at Ilam. (2) That it was transferred from the University's town site.

The magnolia would seem to be approximately 50 years old but there appear to be no official records as to its provenance. There may be former staff or students who remember its arrival on campus and who could help solve the mystery. If so, please contact the Editor.



Groundsmen Brian Tolson (foreground) and Wayne Guthrie on a bit of hard labour preparing the tree for its shift.

Joan Berry
Holidaymakers

Spring in Italy - Opera & Art History Tour

14 May - 17 June 1994

Spring in Italy
Opera and Art History
Study Tour

Beginning and ending in Rome, this 1994 study tour will visit both well-known and less familiar places of interest to fine arts enthusiasts and opera buffs.

You will stay at some of the best-known art cities and visit some of Italy's finest art galleries and monuments. Opera enthusiasts are assured of opportunities to see productions in all the major opera houses.

In addition, there will be visits to places of musico-historical interest such as Puccini's birthplace in Lucca, or his country home at Torre del Lago, with its wealth of fascinating memorabilia.



For further information on this exciting study tour, including a detailed brochure please contact the Educational Travel Unit, Centre for Continuing Education, University of Canterbury, Private Bag 4800, Christchurch Phone 364-2163 or ext 6163

Health and safety

The Health and Safety in Employment Act 1992 came into force on the 1 April 1993.

The new Act focusses on the prevention of harm arising out of work activities. It promotes excellence in the management of health and safety.

Under the Act, virtually everyone in the University is responsible for health and safety of people. Everyone is expected to ensure that nothing they do, or fail to do, causes harm to other people. Other people includes students, contractors and members of the public, as well as employees.

A full time Health and Safety Officer was appointed early this year. The role of the Health and Safety Officer is to make sure that the University meets the requirements of the new Health and Safety Act.

The University also has a Health and Safety Committee. The Committee is responsible, in conjunction with the University Safety Officer for managing University compliance with the Act.

The Committee and the Safety Officer are also responsible for advising departments and sections on implementation of the Act, auditing compliance with the Act, monitoring exposure to hazards, and providing technical advice.

What do we mean by health and safety?

Health and safety means doing everything reasonably practicable to ensure that people are not harmed or exposed to hazards (causes or sources of harm).

In practice Health and Safety in employment means:

- taking all practical steps to provide a safe working environment and facilities for health and safety
- identifying and managing hazards
- providing employees with information about hazards, and training and supervising them to work safely
- everyone taking responsibility for health and safety.

What are your responsibilities?

Under the Act, everyone in the University is responsible for the health and safety of people.

You have a duty to take all practicable steps to ensure your own safety, students and others.

Lester Fund

This fund is used to assist candidates for Masters Degrees who have incurred heavy personal expenses in research. Claims can only be considered for expenses incurred before the closing date for applications.

Eligibility: Masters degree candidates of good academic ability, in financial need and not in receipt of any other financial assistance.

Value: At the discretion of the University - not more than \$200.

Applications: Scholarships Section, Level 3, Registry. Closing date: 30 September.

The University has a general duty to do everything practicable to ensure the safety of employees.

while at work and not to do anything that causes harm to any other person.

What can you do to promote Health and Safety?

You can promote health and safety by wearing required safety equipment and following agreed safety procedures. This will help to protect your own safety and the safety of others.

You should also co-operate with health and safety programmes, report hazardous situations, accidents, incidents (near-miss accidents) and injuries.

What are the University's responsibilities

The University, as the employer, has the most duties to perform to ensure the health and safety of employees while at work. To do this the University must;

- provide a safe working environment
- provide facilities for health and safety
- ensure plant is safe
- ensure employees are not exposed to hazards
- develop emergency procedures

The University must also identify and manage hazards on the campus, provide employees with information about the hazards, and train and supervise employees and students to work safely. The University must also keep a register of accidents, incidents and occurrences of serious harm.

What is the University doing about Health and Safety

The University is faced with a major exercise in complying with the new Health and Safety in Employment Act.

To meet its obligations, the University is developing a programme for the self management of health and safety on the campus.

As a first step in this programme, the Vice Chancellor, as chief executive, has approved a policy for Occupational Health and Safety and Loss Control for the University of Canterbury. This policy will be used to guide the implementation of the self management programme.

The Vice Chancellor has assigned responsibility for implementing the Act to Heads of Department and Section Heads. To help them do this, they have been advised to appoint Departmental and Section safety officers and establish workplace safety committees.

Development of the programme is expected to continue over the next one to two years.

Paul Perry
University Safety Officer

Erskine visitors

Professor John Hutchinson, Emeritus Professor of Engineering Geomorphology at Imperial College, London, is based in the Department of Geology from 15 July to 12 October.

Professor Hutchinson is a world renowned expert on landslides and related processes.

Whilst with the department he will lecture on aspects of slope instability and engineering construction practice to postgraduate students in Geology and undergraduate students in Geology and Civil Engineering.

In addition he will give guest lectures to the New Zealand Geological Society and the New Zealand Geomechanics Society, and liaise with Canterbury Regional Council staff on aspects of hazard assessment and mitigation in Canterbury.

Professor Hutchinson gained a BSc with First Class Honours in Civil Engineering (1947) from the University of Birmingham. He followed this by working for a number of years in Britain, Sweden and Norway. In 1961 he embarked on research at the University of Cambridge and in 1965 was awarded his PhD. In 1987 he was awarded a DSc (Eng) by the University of London for his work in the fields of geotechnics and engineering geology. In 1991 he was the recipient of the British Geotechnical Society Prize.

Professor Hutchinson joined the staff of the Imperial College in 1965 and was made Professor of Engineering Geomorphology in 1977.

Professor Shmuel Oren, Professor of Industrial Engineering and Operations Research, University of California at Berkeley, will be based in the Department of Management from 30 August to 9 October.

Professor Oren's special field of interest is operations research. He will give graduate lectures on topics on modelling of electric power systems for optimal allocation and pricing. He will also conduct student/staff seminars on topics currently being researched in the department of Management.

Professor Oren gained his BSc in Mechanical Engineering (1965) and his MSc in Materials Engineering (1969) from the Technion Institute for Research and Development in Haifa. In 1972 he was awarded both an MS and a PhD in Engineering Economic Systems from Stanford University.

From then until 1980 he did some teaching at Stanford but also worked as a research scientist at the Xerox Palo Alto Research Centre.

Professor Oren joined the staff at Berkeley in 1982. From 1986 he has been Chairman of the Department of Industrial Engineering and Operations Research. It was in 1984 that he was appointed professor.

Buying or Selling Property?
Looking for the Ideal Home
or an Investment?
For professional advice
and assistance please call

ANN CUMMINGS

Giera Real Estate
Tel 351 7155 AH 351 9166.

1995/96 Fulbright programme

United States Research Scholars and Visiting Lecturers

The 1995/96 programme year covers the second semester of 1995 (June-December) and the first semester of 1996 (February-July). For the 1995/96 Programme the Foundation's Board of Directors will be allocating about 40% of the available funds to meet the cost of bringing lecturers and research scholars of standing to New Zealand from the United States. The Budget allocation is likely to be sufficient to provide full grants for approximately twelve senior grantees plus travel grants for two other grantees who are receiving maintenance support from other sources.

In seeking proposals for visiting American scholars in 1995/96 the Foundation is continuing the policy of recent years in emphasising the development of themes seen as having significance to both countries. Accordingly sponsoring institutions are invited to submit proposals covering a single year or for a sequence of visitors spread over a period of two or three years. Consideration will also be given to the award of serial grants enabling a scholar to return to New Zealand for three months a year over a two or three year period while developing a programme. Sponsoring institutions are also invited to consider collaborating with another in formulating a joint proposal.

The themes for 1995/96 are:

1. American Studies — to encourage a better understanding of American people, culture and society on the part of New Zealanders.
2. New Zealand Studies — to promote any study of New Zealand in the social sciences and humanities or the natural and applied sciences as they relate to studies relevant to New Zealand.
3. Educational Development, Innovation and Technology.
4. Cultural Studies — to enhance mutual appreciation of the values, traditions and potential of the arts and crafts in the United States and New Zealand.
5. Changes in American and New Zealand Society — initiatives and responses to social, ethnic, economic, technological and political change.

It will be helpful if proposals are accompanied by a full statement of reasons why the suggested project is considered important and some indication of what the grantee will do if an award is made. The Foundation is seeking to develop new programmes or strengthen existing ones and visitors are not for overcoming shortages in staffing.

If you wish to submit proposals for this programme, please forward them to Mrs N. Robb, Scholarships Section, Level 3, Registry, with all relevant information, no later than 31 August 1993.

The Northern Southland Farm Forestry Association Award 1993

Awards are offered to assist forestry students to undertake individual study or research in Forestry. Preference will be given first to applicants from Southland or West Otago undertaking projects in those regions, then to other applicants undertaking projects in those regions.

Eligibility: Students enrolled for 1993 for First or Second Professional Courses of the Bachelor of Forestry degree, or in postgraduate courses in Forestry. Area of study: tree growing, soil conservation, amenity and economic forestry in Southland and West Otago. Preference to students from Southland or West Otago.

Tenure: One year.
Value: \$200

Applications: Must include: brief outline of aims of the study; methods by which these will be carried out; estimated projected costs of the study.

Applications to: Scholarships Section, Level 3, Registry. Closing date: 5pm 1 September 1993.

New Zealand Studies Development Grants

With the aim of promoting an interest in New Zealand among American scholars, the New Zealand-United States Educational Foundation (Fulbright) is offering a limited number of programme development grants. These grants of NZ\$1,000 each are offered to New Zealand scholars who are travelling to the United States on conference or sabbatical leave.

The grants are restricted to scholars teaching or researching in the arts, humanities, or social sciences. They are offered as an inducement to the New Zealand scholar to visit an American university where an American scholar is known to include New Zealand material in their teaching or research. At least one public presentation (lecture, seminar, or class) covering some aspect of New Zealand culture, history, or society, will be required of the New Zealand

scholar, who must be expanding rather than visiting previously known contacts. It is not intended to award grants retrospectively.

The Foundation has a listing of American scholars with a known teaching or research interest in New Zealand. In addition Centres for New Zealand Studies are located at the University of Hawaii at Manoa, Pennsylvania State University, University of California at Davis, and Bentley College (Massachusetts). For more detailed information contact the Foundation.

Forms of application for the programme development grants are available from the New Zealand-United States Educational Foundation (PO Box 3465, Wellington) with whom applications close on 1 June and 31 December. Please enclose an A4 stamped, self-addressed envelope when requesting application materials.

New Zealand Law Foundation

The New Zealand Law Foundation is established by Trust Deed and administers funds derived (in part) from interest on solicitors' trust accounts pursuant to the Law Practitioners Act 1982.

The objectives of the Law Foundation include the funding of law libraries, legal research, legal education and the protection and promotion of the interests of the public in relation to legal matters.


Applications for grants are now sought from institutions, organisations and individuals who have innovative proposals or projects which are within the objectives of the Law Foundation.

Closing date for this series of applications is 5pm, 30 September 1993.

Information about the New Zealand Law Foundation and applications for grants is available from: The New Zealand Law Foundation, New Zealand Law Society Building, 26 Waring Taylor Street (PO Box 5056), Wellington. Phone 04-472 7837. Fax: 04-473 7909.

PeoplePeoplePeople

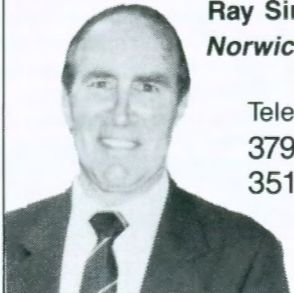
Erskine Fellowships have been offered to: **Dr A. L. J. Cole**, (Plant and Microbial Sciences) to visit Australia, China, UK, USA, and Canada from 6 December 1993 to 16 February 1994; **Dr William Davison**, Department of Zoology to visit UK and Italy from 27 April to 5 June 1994; **Dr P. J. Jordan**, (Chemical and Process Engineering) to visit Thailand, UK, Scotland, USA, Canada and Khon Kaen from 29 September to 12 December 1993; **Dr D. C. Nobes**, (Geology) to visit USA, Holland, France, UK, Finland and Canada from 4 August to 30 October 1994; **Dr A. E. Singer**, Department of Management to visit Australia and Hawaii from 17 October to 21 November 1993; **Professor T. O. Maguire**, Centre for Research in Applied Measurement and Evaluation, Canada, to be held in the Department of Psychology from 4 July to 13 August 1994.



Life Insurance Income Protection

Education Funding

Retirement Funding



Ray Simpson
Norwich Union

Telephone
379 7280
351 5264

Notices

To Let

Fendalton townhouse. Two double bedrooms. Quiet secluded setting, sundeck. Please phone 355 6688.

Two-bedroomed, fully furnished house, five blocks from city centre, large lounge, kitchen and sunroom. Well-established garden, located on Worcester St, 1/2 block west of Stanmore Rd shopping area. For rent from 1 December 1993, 5 January 1995. \$200 p.w. Telephone: 365 2789.

Flatmate wanted

Professional non-smoking people, late 20s to early 30s, wanted to start a fun flat. Phone: 332 3173.

House sit

Are you going overseas? Would you like your home, garden and pets looked after while you are away? I am a mature, capable woman with excellent references, available from August to October, shorter or longer times considered. Phone: 388 5490.

Computer hardware for sale

8 x 3COM 8bit Etherlink II ethernet cards. 3 x Intel 80287-10 numeric co-processors. 1 x GTCO 17in x 12in digitizer. 1 x Numonics 48in x 36in digitizer with draughting stand. Automatic switching print sharing devices with cables:

2 connect up to 8 computers via parallel port to 1 printer. 1 as above but connect up to 4 computers. 1 connect up to 8 computers via serial port to 1 printer.

1 x AMIGA 500, 1 Mb RAM, Bettlemouse, Manuals and Starter software.

Contact David Clark, Ext 8112, School of Forestry.

Computer for sale

Macintosh 512k, 800k drives, plus some software, \$500 o.n.o. Phone Diana 366 0650 (answerphone).

For sale

Innerspring double base with casters. Never been used. Perfect condition \$150 o.n.o. Phone 327 6396 night, or 358 4098 day, ask for Allannah.

Exercise stepper, Formula Pro 160, 1 year old \$295. Contact Lee Leonard, Room 311, Geology, Ext. 7774 or phone 351 6573 afternoons and Friday. (A.H.).

Macintosh Powerbook. 2MB SIMM Expansion Card for Powerbook 100/140/170. Price \$200, (new \$264, 1 year old). Call 366 7001 ext. 7339 during the day.

Car for sale

Nissan Bluebird, 1982, 1.8 litres, luxury sedan in excellent condition, auto, power steering, air conditioning, stereo, and more. \$5350 o.n.o. Phone Sergio ext. 8128 or a.h. 355 3585.

Wanted to rent

Furnished three bedroom house in lower Cashmere or Ilam/Avonhead area. Required from 15 January until 15 June 1994. Please contact: Judith McKinnel, Phone: 348 8987, Fax: 348 5548.

Multiple Sclerosis Society of NZ Inc Grant for Doctoral Research in the field of Multiple Sclerosis

The Multiple Sclerosis Society of New Zealand Inc offers a grant of up to \$12,000 per year for three years, to support doctoral research in New Zealand in the field of Multiple Sclerosis.

The research can be in any relevant discipline including for example, medicine, physiotherapy, occupational therapy, education, sociology or psychology.

The research must be approved by the advisory and Research Standing Committee of the Multiple Sclerosis Society of New Zealand.

The closing date for applications is 31 October, 1993. Further information and application forms are available from: Mrs Jan Bird, National General Secretary, Multiple Sclerosis Society of New Zealand Inc., PO Box 2627, Wellington.

New Zealand/Japan foundation Lectureship positions in Japan

The New Zealand/Japan Foundation established a programme of guest lectureships in Japan in 1987. Up to now, this has involved a 5-month visit (October-February) by a New Zealand lecturer to Tokyo University in alternate years. Previous New Zealand participants include Professor Tony Rayner (1987), Mrs Peggy Koopman-Boyd (1989/90) and Professor Ann Trotter (1991/2).

The Foundation is seeking to make this programme an annual one. Negotiations are currently underway with Ritsumeikan University in Kyoto to establish a lectureship starting in October 1994. It is hoped that this lectureship will be established on the same lines as the current lectureship at Tokyo University.

This will involve a term from October to February (with a break over New Year). The Foundation meets business class travel expenses to and from Japan, and provides a living allowance. Accommodation is provided by the University in Japan. Lectures are given in English. Lectures may be given off-campus (for a fee) as arranged privately or by the University in Japan. It is expected that lecturers will continue to draw their salary as they will not receive a salary from the Japanese University.

Subject matter of lectures would involve a general introduction to New Zealand, including history, geography, peoples, system of government, social and cultural aspects, place in the Asia-Pacific region, and the relationship with Japan.

The New Zealand lecturer would aim to gain experience in teaching about New Zealand in another culture, to open contacts in Japanese academic circles, and to widen those networks for New Zealand academics as a whole. The lectures should reach as wide an audience as possible.

With the aim of establishing a data base of suitable candidates for these lectureships, the New Zealand/Japan Foundation invites expressions of interest from academic staff who would be interested in lecturing in Japan under this programme. The most urgent priority is to find a suitable candidate who would be available to travel to Tokyo University to take up the lectureship in October of this year.

Expressions of interest may be addressed to: The Manager, New Zealand/Japan Foundation, c/o The Ministry of External Relations and Trade, Private Bag 18901, Parliament Buildings, Wellington.

University of Canterbury graduate is the 1993 winner of the \$5000 Alumni Award for Excellence in Teaching

Queen's University, Ontario Psychology professor Dr Barrie Frost is the recipient of the \$5,000 prize as the winner of the 1993 Alumni Award for Excellence in Teaching. He went to Queen's in 1969 and was cited by his nominators as an energetic and enthusiastic teacher who supports and encourages students.

"It's an enormous honour to me that students are the ones who nominated me," Dr Frost said upon learning he had won the award. "It's particularly nice that they think I'm worthy."

A former primary school teacher, Barrie Frost went to night school to earn a university degree. He was fascinated by chemistry, but was unable to attend daytime labs, so he enrolled in psychology, and from the first class he knew he had discovered his life's work.

Dr Frost completed a BA and an MA at Canterbury. With the help of a Rutherford Scholarship from the Royal Society, London, he completed a PhD in 1967 at Halifax's Dalhousie University. He did post-doctoral work in physiology and anatomy at the University of California at Berkeley. At Queen's he has developed a reputation as an exceptional teacher and an excellent researcher.

The Alumni Award for Excellence in Teaching, initiated in 1975, is Queen's first campus-wide teaching honour. Established at the urging of students, the award recognizes Queen's teachers who "show outstanding knowledge, teaching ability and accessibility to students". The \$5,000 award is believed to be the most generous of its kind in Canada.

MICHAEL AUGUST,

LL.B., B.Com.(Cant.)

SOLICITOR

17 Penhelig Place, Fendalton (off Clyde Road between Ilam Road and Wai-iti Terrace). Telephone/facsimilie 351 8228

For efficient and friendly service at reasonable rates in the areas of property law (buying, selling and renting homes) and small business law.

Private mail and telephone calls

A reminder that private letters are not to be sent to the Registry mailroom for processing through the University franking system. Letters or packages which are obviously private will be returned to the HOD concerned and where possible the sender identified.

Similarly private toll calls are not to be placed through the University telephone system. When making a local call, bear in mind that local calls now impose a toll charge which amounts to a quarter of the entire toll costs.

Property For Sale

Ilam \$159,950

Easy five minutes walk to University. Immaculate presentation. Three double bedrooms and huge living areas, including games room and conservatory. View with Paul Bradley. Phone: 359 4099 anytime. Dunbar Topp MREINZ.

Library news — CD-ROM network

The Library is pleased to report that the CD-ROMs running on the Computer Services Centre's Novell server have been operating successfully since the beginning of second term. There is access to 7 databases and information on these is available at all campus libraries.

However, the Library is aware of the problems some users are having in gaining access to the CD-ROMs and of two groups who cannot gain access at all, namely, Macintosh users and X-terminal users. The Library and the Computer Services Centre are endeavouring to address these problems in the following ways.

Macintosh users: Macintosh workstations have been a problem throughout the world for libraries who have networked their CD-ROMs as much of the software for accessing these databases is designed for PCs only. The Computer Services Centre is investigating software options which may allow Macintosh use of the PC software, while the Library will investigate the costs of buying Macintosh software and licences for those CD-ROM databases which offer a Macintosh option. As not all the databases offer such an option this can only be a limited interim solution to the Macintosh problem.

X-terminals: Similarly, the Computer Services Centre will test multitasking

software on a PC to see if this will provide a successful link to the CD-ROMs for X-terminal users.

Progress on the success or otherwise of these initiatives will be reported on at a later date.

A more general problem has been that some PC users do not have the appropriate software to communicate with the Novell server. Each of these cases is individual and no general guidelines can be given except that assistance with any such problems should be sought in the first instance from your departmental computer expert/technician, then the Computer Services Centre Help Desk.

Computer Science, Mathematics and the Engineering Faculty all have local and individual problems in connecting to the Novell server. The Engineering Faculty has addressed its problems and a viable solution has been arrived at, apparently.

The intention is to increase accessibility and scope of the CD-ROM network as much as the technology and the costs will allow. The Library is committed to providing remote and easy access to electronic information retrieval tools and appreciates the forbearance of those users for whom the joy of remote access is still just out of reach.

R. W. Hlavac
University Librarian

Sense of déjà vu

Some problems just won't go away. It's interesting to note that the following article was run in the *Chronicle* of June 1966.

Learn now, and pay for it later

Will students eventually be required to pay for at least part of the cost of their university training out of future earnings? This question has been raised again in Britain by Sir Douglas Logan, Principal of London University, in his annual report; and although the idea has not been welcomed by other Vice-Chancellors, the acute financial problems facing universities could force a change of heart.

The education correspondent of *The Times* says the Government's new methods of taxing industry and covenants are drying up a once promising source of private funds. At the same time the recent cuts in capital expenditure and the paucity of the recurrent grant have shown that state support is both wayward and insufficient.

This means that, if the universities are effectively to survive and ward off parliamentary prying into their affairs, they must find alternative ways of raising money. Student earnings in later life are both an attractive and lucrative method.

University students have consistently opposed any attempt to make them repay the cost of higher education, for a mixture of good and bad reasons. But the most powerful argument against the plan was put forward by Lord Robbins. This is that to introduce a loan system (the most commonly suggested form of repayment) while expanding the universities is to risk deterring the students

from working-class homes that universities most want to attract.

The scheme favoured by Sir Douglas avoids this to some extent in that it has more of the overtones of a tax than loan. Students would borrow what they wanted to pay university fees of £500 or even more. They would then have a percentage of their income, proportionate to what they borrowed, deducted throughout their working life.

Although this would bolster university funds, it could be a little hard on students whose family circumstances force them to borrow most. By the time they retired they would have probably paid out more than they originally got and certainly more than their wealthier fellows. It might also mean abolishing industrial scholarships, and could, at the other extreme, encourage students to raise loans in the open market, as being ultimately cheaper than borrowing from the state.

The alternative is the type of loan scheme run by the Swedes, under which students repay only the capital they borrowed, plus interest. It works well there because there is a long tradition behind it, but a number of difficulties could arise with its introduction here.

Would it encourage more students to work abroad so as to avoid repayment? What would happen to women who never worked? Would it cut down the numbers going into higher education?

Up to now the pros and cons have been evenly matched, but the balance could be tipped if the universities' financial difficulties continue. Irate and frustrated vice-chancellors might press the Government to act.

Brian's Car Servicing

For all types of repairs

10% discount for university staff on retail price of parts. Pick up and delivery from university. Agent for Centurion Batteries. Can supply new and retread tyres, exhaust systems. Attend to WOF requirements.

Phone 342 9680, day and evening.

Advertisement

Chronicle



Editor: Liz Grant,
ext. 6260, Level 5, Registry

Next Issue: 19 August 1993

Deadline: 16 August 1993

Address: Information Office, University of Canterbury, Private Bag 4800, Christchurch.

The University of Canterbury *Chronicle* is typeset and printed in the University Printery.